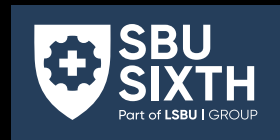
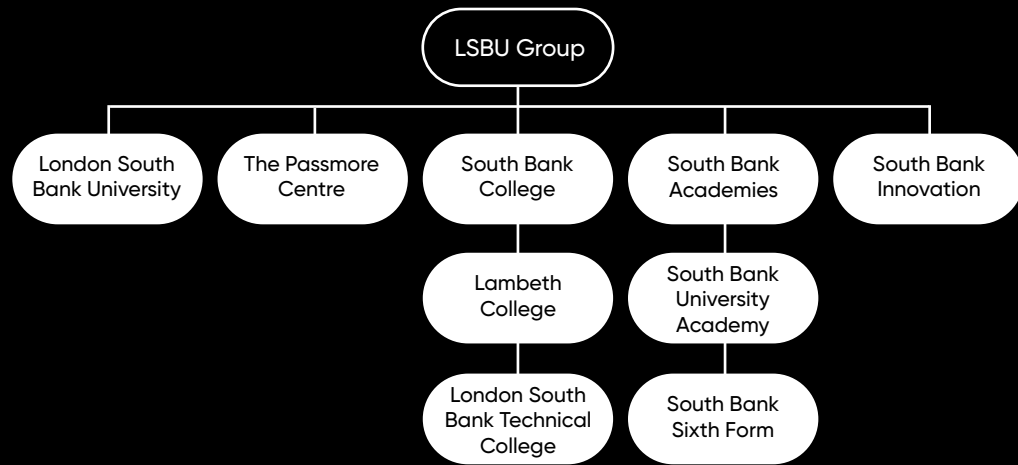


## Fit for the future, ready for the real world.

Our goal is to help you succeed, no matter what your age, background, or educational experience. We provide career focussed pathways across all levels, from Entry to Level 8, providing high quality education and sector specific learning to prepare you for your life beyond education and qualifications.

Part of **LSBU | GROUP**



Joining LSBU Group gives our students unrivalled access to educational opportunities, advice and guidance as well as sought-after apprenticeships and work placements. Our students are guaranteed progression to both LSBTC and LSBU\*.

Whether your next destination is within LSBU Group or elsewhere, we are one of a handful of providers who offer students the opportunity to progress to one of our new Level 4 one-year courses. Successful completion of this enables our students to fast-track to year 2 of an LSBU degree, saving money as well as providing a standalone, qualification that employers recognise should you decide to leave your studies there.

\*after successful completion of a Group qualification that has a progression route

### Further information about careers in Built Environment and Construction can be found here::

www.careerpilot.org.uk  
 www.nationalcareers.service.gov.uk  
 www.startprofile.com  
 www.prospects.ac.uk

Building and Construction Careers: www.ciob.org  
 Electrical Careers: www.niceic.com  
 Plumbing Careers: www.ciphe.org.uk  
 Quantity Surveying Careers: www.rics.org/uk  
 Architectural Careers: www.ciat.org.uk

Places on Built Environment and Construction courses, at all levels, are highly sought-after every year. If you believe this is the career pathway for you, but you lack hands-on experience, then we advise you to seek a placement prior to applying.

### The following websites are a great place to start:

www.instituteforapprenticeships.org  
 www.goconstruct.org  
 www.targetcareers.co.uk/career-sectors/construction-and-property  
 www.architecture.com/education-cpd-and-careers

**LSBU | GROUP**

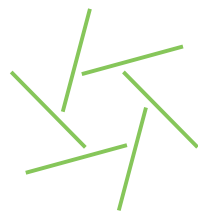


# BUILT ENVIRONMENT AND CONSTRUCTION



## The Need for Built Environment and Construction Roles

With the Built Environment completely surrounding us, each and every building, man-made space, and piece of support infrastructure requires well-trained and qualified professionals to continue to shape it.



**The Built Environment and Construction industry in the UK is worth over £467 billion, and has over 325,000 companies, employing an estimated 2.66 million people**

**The annual recruitment requirement in Greater London means an extra 26,000 workers will be needed by 2026**

**London is anticipated to continue to grow by an annual average rate of 3.4%**

**The fastest rates of growth are expected in the Private housing, Commercial, Infrastructure, and Housing repair and maintenance**

## An Introduction to Built Environment and Construction

The term **Built Environment** refers to each and every aspect of the world around us that has been built by humans, for humans, and is used for human activity. Quite simply, it is everything that has been manmade around us, and even includes the transitional spaces where the Built Environment meets the natural world.

This includes all buildings – be they residential, commercial, industrial, educational, medical, institutional, or used for recreation, assembly, or infrastructure; our transport network including roads, pavements, railways, airports, docks and canals; our utilities network including the electricity and water infrastructure and telecommunications network – both above and below ground; and even all the human-made 'natural' spaces between buildings such as parks, gardens and manmade lakes.

**Construction**, on the other hand, refers to the physical creation of the Built Environment in all its forms, and also encompasses its repair and maintenance.

Whether you pride yourself on your practical skills, and are looking for a role where you will get the satisfaction of seeing something you built with your own hands put to use, or if you are more academically focused and strive for a more managerial, analytical or design-based future career no matter where your passion and qualities lie, you'll find a rewarding career personally-suited to you.



**APPLY NOW**



## Is a career in Built Environment and Construction for me?

If you are curious about the creation and planning of buildings and infrastructure, have great practical skills and enjoy the satisfaction of seeing something you built with your own hands, or even looking for a more managerial, analytical, or design-based career, then the construction industry could be for you. No matter where your passion and qualities lie, you'll find a rewarding career personally suited to you.

### Careers in Built Environment and Construction

The Built Environment and Construction industry in Greater London alone **requires an additional 5,200 new recruits each and every year.**

The LSBU Group have a heritage of teaching architectural education for over 100 years and teaching Building Services courses for more than 75 years. Around half of those working as consultants in the Construction industry have passed through London South Bank University.

Not only are there a number of major large-scale projects such as the Brent Cross Town development (£7bn), Old Oak Park (£5bn), The Affordable Homes Programme (£4bn), Regeneration of Thamesmead (£1bn), London Power Tunnels 2 project (£750m), and the Salisbury Square Development (£300m), but residential builds need to be accelerated to meet demand, London's transport infrastructure needs constant maintenance and updating, over 500 new high-rise buildings are planned for both residential and commercial use, and all existing buildings and infrastructure need skilled and qualified professionals to continually repair, maintain and improve them.

*"We are delighted to offer sector leading qualifications that meet the demands and expectations of local and national employers"*

Tim Weston,  
 Director LSBTC  
 (STEAM Pathways)

*"Companies often contact the LSBU Group looking for graduates or work placement students, which makes it much easier to enter the industry, there are lots of chances to make contacts and network"*

Lee Tobin  
 BEng (Hons) Building Services Engineering

*A Construction or Project Manager can expect an average annual salary of around*

**£45-£46k**

*Junior or Assistant Managers, earn circa*

**£30k p.a.**

*A fully-qualified Quantity Surveyor will likely be paid around*

**£35k p.a. rising to £50k for a Senior Quantity Surveyor.**

*A fully-qualified Architect can earn anything from*

**£50-£90k per year**

*(with a national average of £70,142).*

### There are plenty of opportunities open to you. Here are just a few ideas:

- Acoustics Consultant
- Architect
- Architectural Technologist
- Bricklayer
- Building Control Officer
- Building Site Inspector
- Building Surveyor
- Carpenter
- Cavity Insulation Installer
- Commercial Energy Assessor
- Construction Plant Operator
- Construction (Site) Manager
- Dry Liner
- Electrician
- Facilities Manager
- General Practice Surveyor
- Glazier
- Kitchen and Bathroom Designer or Fitter
- Landscaper
- Painter and Decorator
- Pipe Fitter
- Plasterer
- Plumber
- Quantity Surveyor
- Roofer
- Scaffolder
- Site management
- Stonemason
- Town Planner
- Welder



# BUILT ENVIRONMENT AND CONSTRUCTION



London South Bank University



London South Bank Technical College



Lambeth College



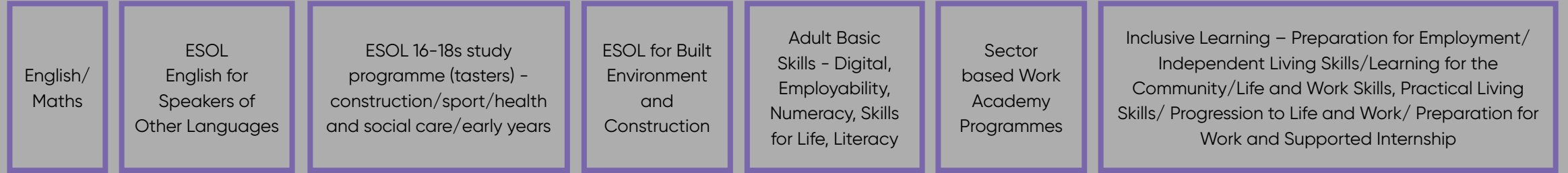
South Bank University  
Sixth Form



South Bank University Academy

## ENTRY LEVEL

Award, Certificate (ELC), Diploma  
English for speakers of other languages (ESOL)  
Essential skills  
Functional skills  
Skills for Life



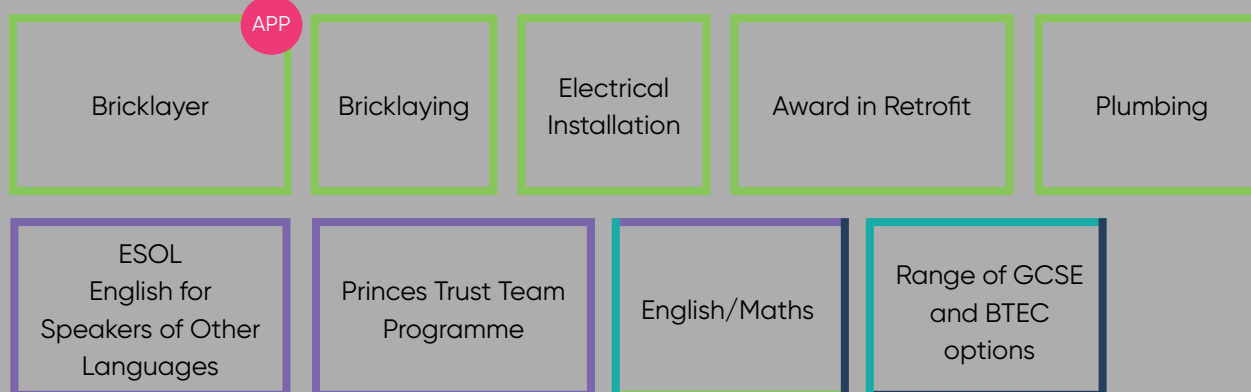
## LEVEL 1

First Certificate, Award, Certificate, Diploma, ESOL  
Essential skills  
Functional skills  
National vocational qualification (NVQ)



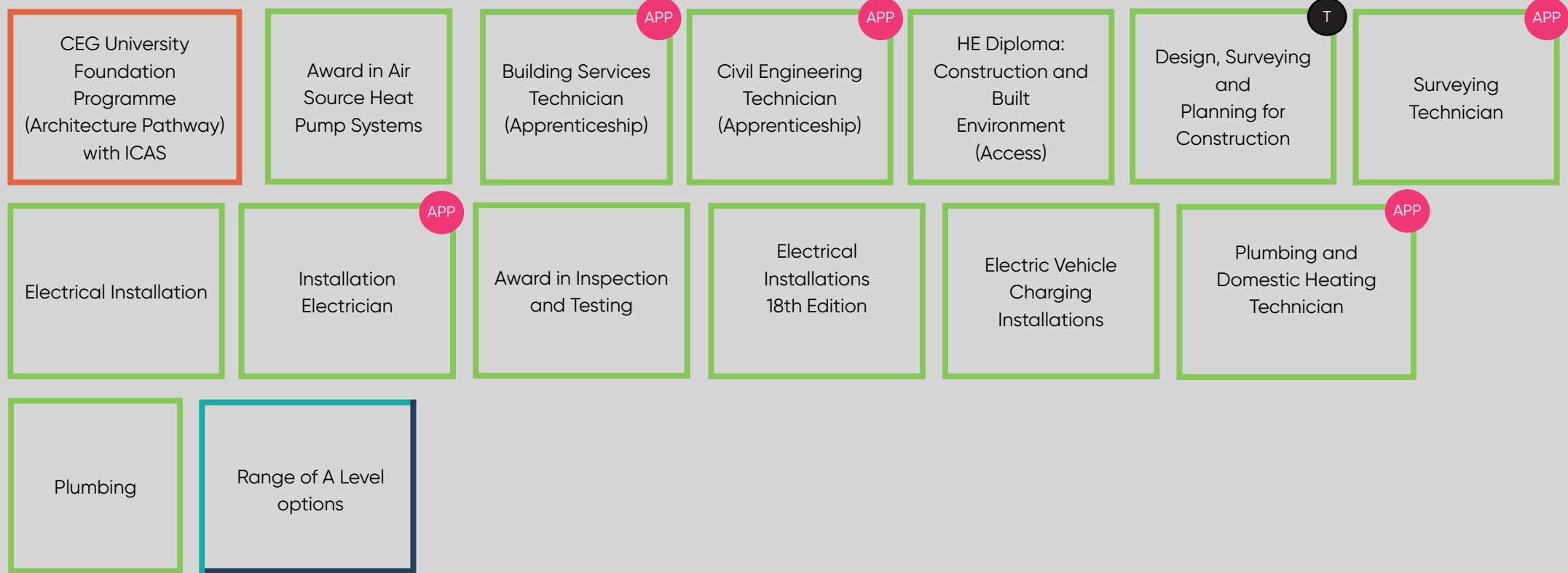
## LEVEL 2

Intermediate Apprenticeship, Award, Certificate, Diploma, ESOL  
Essential skills  
Functional skills  
NVQ  
GCSE  
Technical Certificate



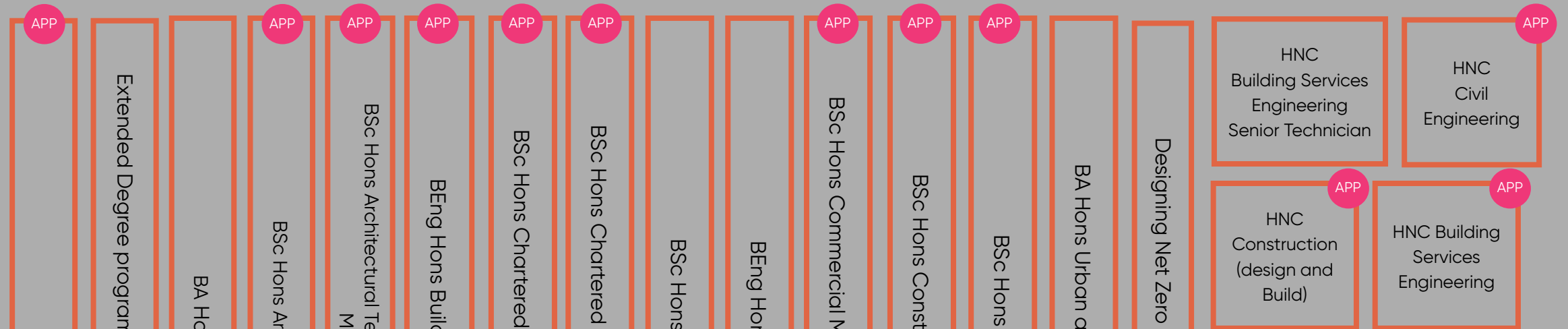
## LEVEL 3

Access to HE Diploma  
Advanced Apprenticeship  
A Level  
Applied General Award, Certificate, Diploma, ESOL  
NVQ  
T Level  
Technical Diploma



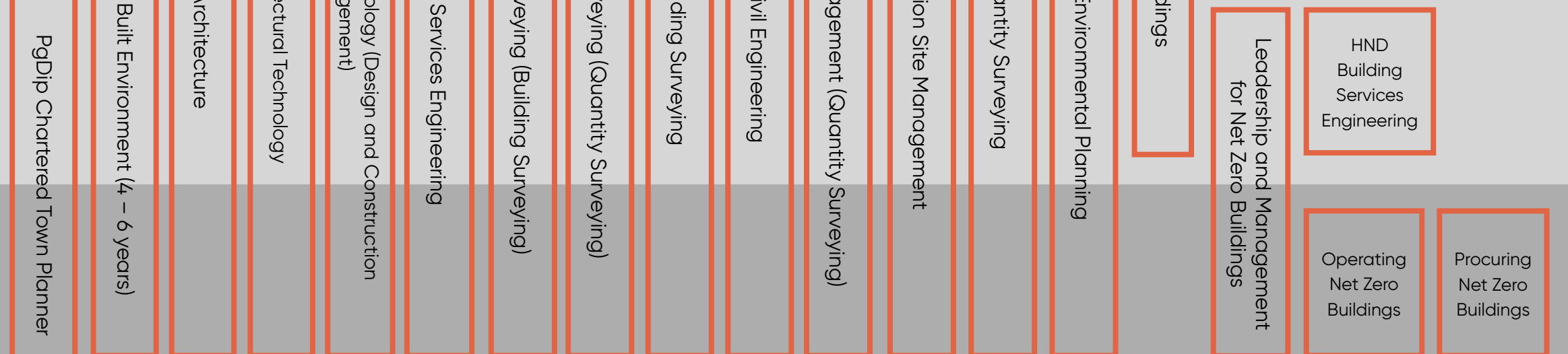
## LEVEL 4

CertHE  
Higher Apprenticeship  
HNC  
Award, Certificate, Diploma  
NVQ



## LEVEL 5

DipHE  
Foundation Degree  
HND  
Award, Certificate, Diploma  
NVQ



## LEVEL 6

Degree Apprenticeship  
Degree (with or without Honours)  
Graduate Certificate/Diploma  
Award, Certificate, Diploma  
NVQ



## LEVEL 7

Integrated Master's Degree  
Award, Certificate, Diploma, NVQ, Master's Degree  
Postgraduate Certificate / Diploma  
Postgraduate Certificate in Education (PGCE)



## LEVEL 8

Doctorate (PhD or DPhil)  
Award, Certificate, Diploma

<sup>T</sup> T Level, includes 45-day industry placement

<sup>APP</sup> Apprenticeship

<sup>F</sup> Foundation year available