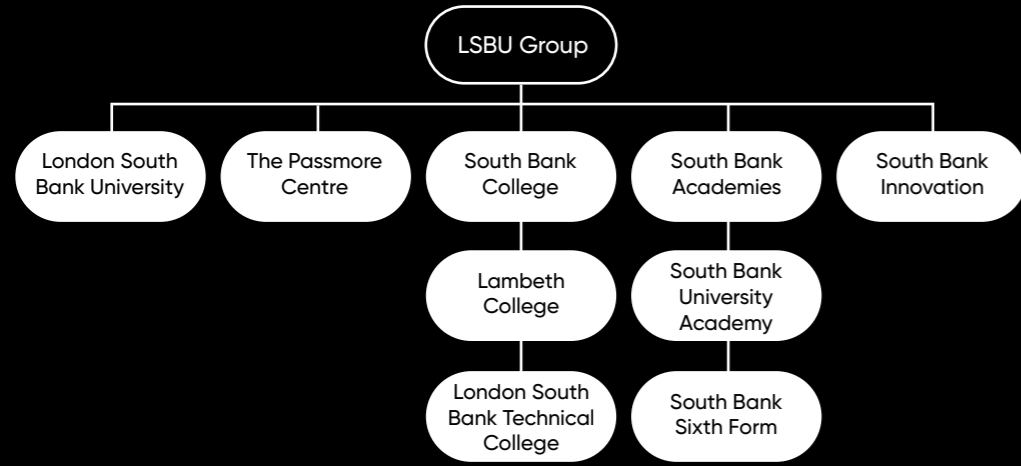


## Fit for the future, ready for the real world.

Our goal is to help you succeed, no matter what your age, background, or educational experience. We provide career focussed pathways across all levels, from Entry to Level 8, providing high quality education and sector specific learning to prepare you for your life beyond education and qualifications.



Joining LSBU Group gives our students unrivalled access to educational opportunities, advice and guidance as well as sought-after apprenticeships and work placements. Our students are guaranteed progression to both LSBTC and LSBU\*.

Whether your next destination is within LSBU Group or elsewhere, we are one of a handful of providers who offer students the opportunity to progress to one of our new Level 4 one-year courses. Successful completion of this enables our students to fast-track to year 2 of an LSBU degree, saving money as well as providing a standalone, qualification that employers recognise should you decide to leave your studies there.

\*after successful completion of a Group qualification that has a progression route

Further information about careers in Education can be found here:

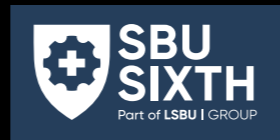
- [www.careerpilot.org.uk](http://www.careerpilot.org.uk)
- [www.nationalcareers.service.gov.uk](http://www.nationalcareers.service.gov.uk)
- [www.startprofile.com](http://www.startprofile.com)
- [www.prospects.ac.uk](http://www.prospects.ac.uk)
- [www.careersmart.org.uk](http://www.careersmart.org.uk)
- [www.allaboutcareers.com](http://www.allaboutcareers.com)

Places on Education courses, at all levels, are highly sought-after every year. If you believe this is the career pathway for you, but you lack hands-on experience, then we advise you to seek a placement prior to applying.

The following websites are a great place to start:

- [www.getintoteaching.education.gov.uk](http://www.getintoteaching.education.gov.uk)
- [www.schoolexperience.education.gov.uk](http://www.schoolexperience.education.gov.uk)
- [www.get-information-schools.service.gov.uk](http://www.get-information-schools.service.gov.uk)
- [www.brightnetwork.co.uk/career-path-guides/education-teaching](http://www.brightnetwork.co.uk/career-path-guides/education-teaching)
- [www.teachers.thenational.academy/lessons-for-itt](http://www.teachers.thenational.academy/lessons-for-itt)

Part of LSBU | GROUP



LSBU | GROUP

# EDUCATION



## The Need for Education Roles

There are **24,442** schools (excluding FE colleges and universities) in England. There are approximately **3,250** schools in London alone.

There are **973,860** teachers, teaching assistants, and teaching support staff in England (full time equivalents)

Of the **973,860** education workforce, **50%** are teachers, **30%** teaching assistants, and **20%** support staff.

There are **468,371** registered teachers in England, and **281,094** teaching assistants.

Teacher vacancies (full and part time) doubled from **2020-22**; from **1,100** to **2,020**

There are **9,073,832** school pupils in England across all schools



## An Introduction to Education

A career in Education is much more than just a job; it is a true vocation which shapes not only the lives of young people (and adult learners), but helps to shape individual communities, society, and the workforce of the future. There can be few things in life as rewarding as seeing your teachings take hold and knowing that you are directly responsible for increasing a learner's knowledge.

You are not only improving their understanding of a subject, but you are also teaching them transferable skills that will help them throughout life; you are teaching them to socialise, to think independently, to develop study skills, and enabling them to discover who they are as an individual. For the right person with the requisite qualities and passion, this is a genuinely rewarding, hugely important, highly varied, and always interesting career pathway.

But the Education pathway isn't limited to just those of you interested in becoming teachers, far from it. England's network of over 24,000 schools, teaching over 9 million children, couldn't function without the assistance and support of a huge variety of careers. From teaching assistants to Special Educational Needs (SEN) practitioners, to learning mentors, to nursery workers, to education officers, to welfare officers; no matter where your skills, passions, and ambitions lay, you're sure to find your perfect career on this hugely varied and expansive pathway.

APPLY NOW



## Is Education the Right Pathway for You?

Gaining the necessary qualifications, and undertaking voluntary placements, can teach you the knowledge and expertise you will need in this sector, but there are several personal qualities and transferrable skills that are essential for a successful and rewarding career in the Education sector.

You'll need to have outstanding written and verbal communication skills, as well as great listening and comprehension skills; great interpersonal skills and the ability to inspire and motivate those around you, of all ages; strong IT skills, particularly in the use of computers, tablets, digital display equipment, and be comfortable using a range of software packages; a huge degree of patience, understanding, compassion and empathy; flexibility in your working approach and be highly-adaptable; excellent time-keeping, reporting and organisational skills; problem solving and conflict resolution skills; a strong interest in maintaining your professional skills and knowledge; be equally comfortable with both independent and team working; a high level of creativity; be dedicated, focussed and self-motivated; and possess outward confidence and strong leadership skills.

## Careers in Education

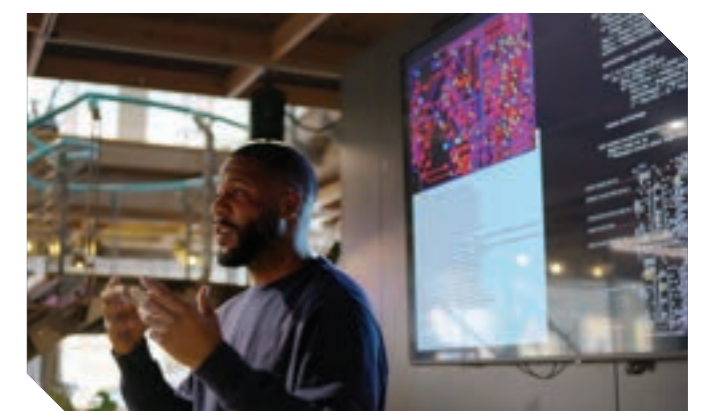
With teacher vacancies (full and part time) of approximately 2,300 positions, and with schools competing for the most talented candidates, even with a current workforce of nearly 1 million people, it's clear that there has never been a better time to embark on a career in Education.

The average (median) teacher Full-time Equivalent (FTE) salary:

- Across all teachers the average salary is **£41,604 p.a.**
- Classroom teacher average salary is **£40,300 p.a.**
- Other leadership teacher (excluding headteachers) average salary is **£56,800 p.a.**
- Headteacher average salary is **£70,800 p.a.**

## There are plenty of opportunities open to you. Here are just a few ideas:

- Academic Librarian
- Careers Advisor
- Community Education Officer
- Early Years Education Assistant
- Early Years Teacher
- Education Administrator
- Education Counsellor
- Education Support Worker
- Education Welfare Officer
- Educational Mental Health Practitioner
- Educational Psychologist
- English for Speakers of other Languages (ESOL) Teacher
- Further Education Teacher
- Headteacher
- Higher Education Lecturer
- Learning Mentor
- Learning Support Assistant
- Museum Education Officer
- Nursery Manager
- Nursery School Practitioner
- Nursery Worker
- OFSTED Inspector
- Primary School Teacher
- Primary School Teaching Assistant
- Private Tutor
- Secondary School Teacher
- Secondary School Teaching Assistant
- Special Educational Needs (SEN) Teacher
- Supply Teacher
- Teaching Laboratory Technician



# EDUCATION



London South Bank University



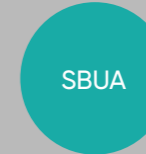
London South Bank Technical College



Lambeth College



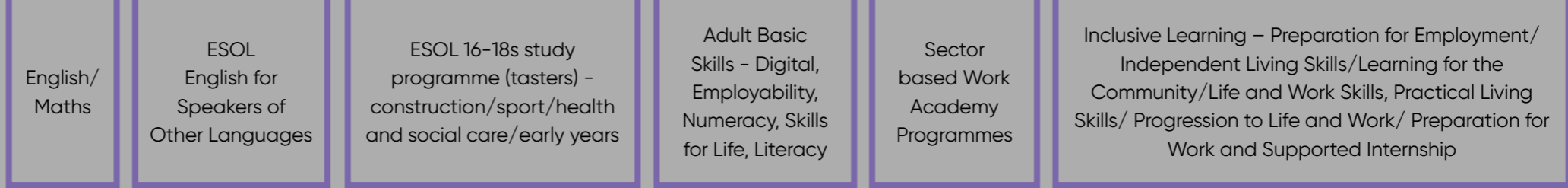
South Bank University  
Sixth Form



South Bank University Academy

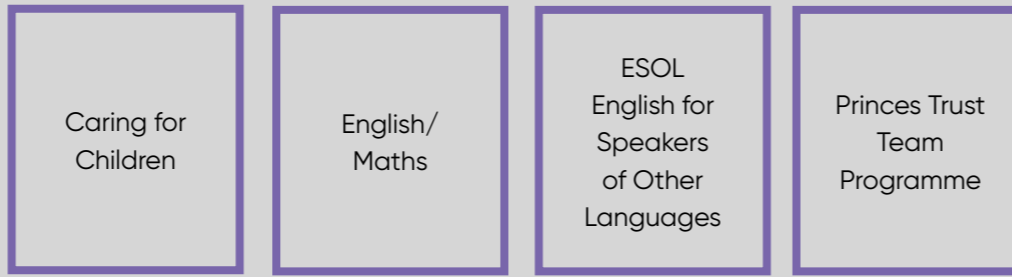
## ENTRY LEVEL

Award, Certificate (ELC), Diploma  
English for speakers of other  
languages (ESOL)  
Essential skills  
Functional skills  
Skills for Life



## LEVEL 1

Award, Certificate (ELC), Diploma  
English for speakers of other languages  
(ESOL)  
Essential skills  
Functional skills  
Skills for Life



## LEVEL 2

Intermediate Apprenticeship,  
Award, Certificate, Diploma, ESOL  
Essential skills  
Functional skills  
GCSE  
NVQ



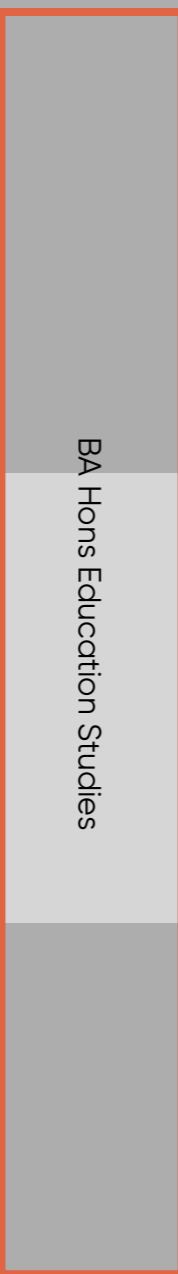
## LEVEL 3

Access to HE Diploma  
Advanced Apprenticeship  
A Level  
Applied General  
Award, Certificate, Diploma, ESOL  
NVQ  
T Level



## LEVEL 4

CertHE  
Higher Apprenticeship  
HNC  
Award, Certificate, Diploma  
NVQ



## LEVEL 5

DipHE  
Foundation Degree  
HND  
Award, Certificate, Diploma  
NVQ

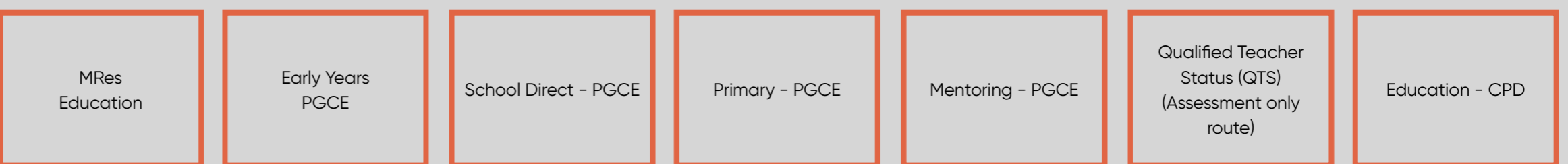
## LEVEL 6

Degree Apprenticeship  
Degree (with or without Honours)  
Graduate Certificate / Diploma  
Award, Certificate, Diploma  
NVQ



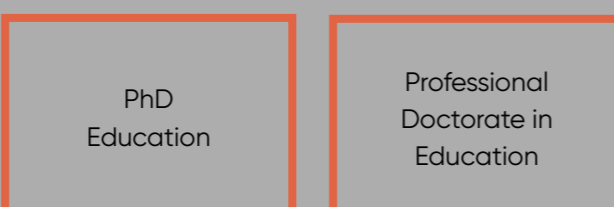
## LEVEL 7

Integrated Master's Degree  
Award, Certificate, Diploma,  
NVQ, Master's Degree  
Postgraduate Certificate / Diploma  
Postgraduate Certificate in Education  
(PGCE)



## LEVEL 8

Doctorate (PhD or DPhil)  
Award, Certificate, Diploma



T T Level, includes 45-day industry placement    APP Apprenticeship    F Foundation year available