



# OUR AMBITIONS YOUR FUTURE

2020-25

# Welcome

**Our strategy is designed to support us in delivering our vision to transform lives, communities, businesses and society through applied education and insight.**



South Bank Colleges, comprising Lambeth College and London South Bank Technical College, exists to meet the needs of those that live, work and learn in south London.

We recognise the vital role we play in providing access to lifelong learning for young people and adults. We pride ourselves in our inclusive approach that puts access to education, at the heart of our work, whether that is through gateway qualifications in English, maths, ESOL (English for Speakers of Other Languages) and employability skills or through technical and professional education.

We recognise the central role South Bank Colleges has to play as an anchor organisation in south London working in close partnership with industry, the public sector and local authorities, to provide a highly inclusive education and responsive offer. We understand the integral part that we, as a civic minded organisation, have to play in contributing to the improved health and economic wellbeing of our local residents and communities.

Lambeth is known for having huge ambition, energy and opportunity as well as a strong history of openness and diversity. It is home to entrepreneurs and innovators – people who have hopes of changing the lives of others and their own.

We understand the residents of Lambeth and the individuals that seek to better their circumstances through our colleges. We cater to them by continuously working towards creating diverse and inclusive spaces and providing opportunities outside of the courses we offer to allow well-rounded growth and development.

As part of LSBU Group, our colleges are uniquely placed to support lifelong learning from compulsory schooling, through to Further and Higher Education. Our new Career Progression Pathways model of Professional and Technical Education means we are able to provide access to high quality education that supports entry into good jobs and life-long career development and training.

As career focussed colleges, we work with industry and recognise the key role we play in engaging with employers and ensuring that they are involved in the design and delivery of our offer. We ensure that our graduates have a clear line of sight to work and access to on-going training and professional development.

Our new London South Bank Technical College, based in Nine Elms (opening in September 2022) will provide high quality applied technical education from Level 2 through to Level 4. With industry standard facilities and an employer hub, we will be able to respond quickly to employer needs and ensure that we can continue to support the workforce of the future.



## We are focussed on ensuring high quality support both inside and outside the classroom that ensures high levels of student success.

We place great value on careers guidance, work experience, enrichment and voluntary work which form an integral part of being a student at the College. We recognise that support needs can vary from person to person and are committed to addressing the barriers many face in succeeding in education and progressing to good jobs.

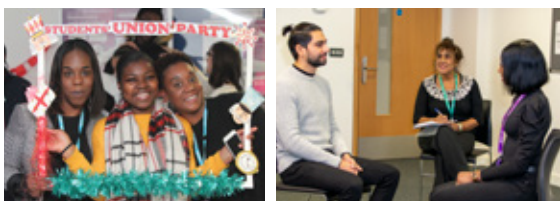
At the heart of South Bank Colleges is our commitment to equality, diversity and inclusion (EDI). We are a diverse organisation that is determined to place EDI as a central thread running throughout all that we are doing and trying to achieve. We believe we are a welcoming, inclusive place to work and learn, that we are respectful of others and committed to providing opportunities for all.

We also recognise that we have more to do in challenging inequalities both within our own organisation and in responding to systemic inequalities in society.

Central to our commitment to EDI is our focus on enhancing our individual and collective understanding of inequality and discrimination and using this learning to develop as a college and address inequality in all its guises.



**Fiona Morey**  
Executive Principal



## What our governors & trustees have to say...

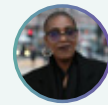
“South Bank Colleges is the heartbeat of the community in the borough.

The values of excellence, professionalism, integrity, inclusivity and creativity are demonstrated in the teaching and learning delivered by the staff and the success and progression of the students.

”

**Shakira Martin**  
Former President of the National Union of Students UK & Trustee

“Lambeth Council is proud to be supporting this strategy, which aligns perfectly with our ambitions for our diverse communities in Lambeth.



**Councillor Jacqui Dyer MBE**  
Lambeth Council

“Working collaboratively with other key organisations in the local community allows us to identify the needs of our local people and employers and we can join with partners to ensure those needs are met.

”

**Ruth Farwell**  
Chair of the Board

“The South Bank Employers' Group recognises the vital role that South Bank Colleges plays in engaging with local employers, and really values the College's commitment to engagement and partnership working.

”

**Nic Durston, Chief Executive**  
South Bank Employers Group (SBEG)

# Our Vision, Our Ambitions

## Our Values, Our Behaviours



### Our Vision

To transform lives, communities, business and society through applied education and insight.

### Our Strategic Ambitions

#### Access to Opportunity

Through local and global partnerships, we will create opportunities for individuals, businesses and society and seek to remove barriers to opportunity and success.

#### Student Success

We will be recognised for our inclusive, high quality teaching and learning and the support we provide to students that enables them to be successful.

#### Real World Impact

As an anchor organisation in south London, we embrace our civic responsibilities to those that live, work and learn in the area and our duty to have a positive economic impact on individuals, communities and businesses in the region.

#### Fit for the Future

Establishing a sustainable, responsive model for further education, with high quality physical and digital learning environments and a highly skilled and inclusive workforce.

### Our Values

- Excellence
- Professionalism
- Integrity
- Inclusivity
- Creativity

### Our Behaviours

We will deliver our ambitious strategy through the high standards, professional expertise and commitment to inclusion of our staff and those we engage with.

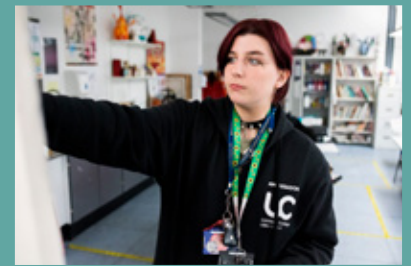
Our college values shape who we are as an organisation and our behaviours are how we demonstrate our commitment to these values in our day to day work.



# Our Goals

We will know our strategy is successful when:

- 1 We have established Lambeth College and London South Bank Technical College leading to a significant increase in the number of students accessing high-quality gateway and technical education.
- 2 We are known for being a diverse and inclusive college that has a positive impact on social mobility and social justice.
- 3 We have a strong reputation for highly responsive employer partnerships, meeting industry needs and providing high quality career pathways as part of our unique LSBU Group education family.
- 4 All our students, regardless of background, are successful in achieving their qualifications with achievement rates in the top 10% of colleges.
- 5 All our students are supported in developing gateway qualifications English, maths and digital skills to level 2+.
- 6 We have a strong reputation with students for providing excellent personalised support and enhancing our students' experiences through impactful enrichment programmes that support their future success.
- 7 All our students have access to high quality careers advice and guidance and are confident in their next steps with 100% positive destinations.
- 8 We are externally recognised for the quality of our expertise, professional practice and research in relation to lifelong learning.
- 9 We are valued for being a diverse and inclusive workplace where staff thrive and there are no barriers to recruitment and career progression.
- 10 We have a sustained financial model that secures the future of South Bank Colleges.





## Access to Opportunity

Through local and global partnerships we will create opportunities for individuals, businesses and society and seek to remove barriers to opportunity and success.

We will achieve this by:

- 1 Developing a curriculum offer and model that is designed with employers, provides students with access to work based experiences, leading to a reduction in skills gaps and increases local residents access to good local jobs.
- 2 Providing specialist and innovative bespoke provision with local partners for those most at risk of being excluded from realising the benefits of education.
- 3 Establishing a Gateway Centre of Excellence supporting increased access to English, maths, English for Speakers of Other Languages (ESOL) and digital skills for young people and adults. The Gateway Centre will increase progression to employment and further education and training through gateway qualifications.
- 4 Establishing a new technical college with centres of excellence providing increased access and participation in technical education for young people and adults. The College will deliver an increase in those accessing technical pathways from level 2 through to levels 4 & 5 supporting access to skilled employment.

## Student Success

We will be recognised for our high-quality teaching and learning and the support we provide to students that enables them to be successful and to secure good progression opportunities.

We will achieve this by:

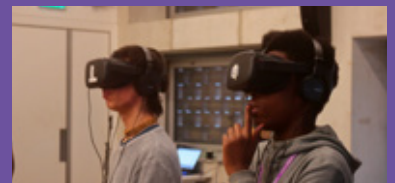
- 1 Developing students' English and maths skills as an integral component of all courses, enabling progression to Level 3 or 4, Higher Education courses and increased employment opportunities. There will be a whole college approach supporting a step change in the proportion of Level 2 and 3 students graduating with Level 2+ qualifications in English and maths.
- 2 Enhancing our collective understanding and expertise around the socio-economic and wellbeing needs of our students. We will use this expertise to inform the way we deliver to and support our students inside and outside the classroom leading to a closing of achievement gaps.
- 3 Designing our student learning experience so that it addresses inequalities in achievement and supports the acquisition of experiences and skills that enhance progression opportunities for all, including: access to high quality engagement with employers, volunteering, enterprise and enrichment opportunities.
- 4 Fully exploiting the benefits and opportunities of digital technologies to enhance the learning experience of all students.

## Real World Impact

As an anchor organisation in south London we embrace our civic responsibilities to those that live, work and learn in the area. We have a duty to create a positive economic impact on communities and businesses in the region.

We will achieve this by:

- 1 Engaging in local multi-agency, evidence-based research that will enable proactive responses to the challenges local residents face in accessing education and its socio-economic and health benefits.
- 2 Working directly with employers, the Greater London Authorities and local authorities to ensure strong alignment between skills needs and the education and training offer in south London. We will ensure college graduates are well prepared to access good jobs and supported with on-going career progression through our LSBU Group partnership career pathways framework.
- 3 Developing an evidence-based approach to teaching and learning with a particular focus on English and maths and technical education. We will develop a rich understanding of professional practice and embed a research culture of learning about learning that will contribute to national research on vocational and technical education. In partnership with the Group, we will establish a Centre for Professional and Technical Education research.

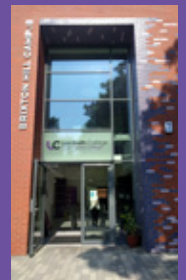


## Fit for the Future

Establishing a sustainable, responsive model for Further Education, with high quality physical and digital learning environments and a highly skilled and inclusive workforce.

We will achieve this by:

- 1 Establishing a sustainable financial model that enables the College to be secure in providing lifelong learning opportunities for our communities and meeting the needs of our key stakeholders.
- 2 Fully exploiting the funding opportunities available to maximise access to education and training meeting the needs of our key stakeholders.
- 3 Developing robust operational processes and systems that provide accurate and detailed data analysis enabling rapid and decisive strategic and operational decision making that supports the delivery of the strategic goals.
- 4 Creating high-quality, flexible, physical and digital learning environments, that embrace innovation and sustainability and enables access to personalised learning.
- 5 Building an inclusive and ambitious learning culture, where our highly motivated workforce represents the communities and student bodies we serve.



Lambeth College

Clapham Campus

45 Clapham Common South Side  
London, SW4 9BL

Brixton Campus

56 Brixton Hill  
London, SW2 1QS

London South Bank  
Technical College

Belmore Street,  
Wandsworth Road,  
London SW8 2JY

Opening  
Sept  
2022